

AECOM

PROJECT
60640215 - LONGFIELD SOLAR FARM

CLIENT



CONSULTANT
AECOM Limited
3rd Floor Portwall Place,
Portwall Lane,
Bristol, BS1 6NA
www.aecom.com

LEGEND

- Order Limits
- 11kV Diversion**
- Existing (Old)
- Existing (New)
- Proposed

NOTES

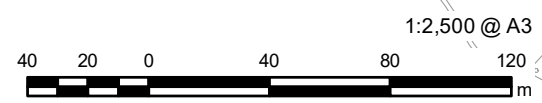
Reproduced from Ordnance Survey digital map data © Crown copyright 2021. All rights reserved. Licence number 0100031673.

ISSUE PURPOSE
Environmental Statement
APFP Regulation: 5(2)(a)

PINS REFERENCE NUMBER
EN010118

FIGURE TITLE
11kV Powerline Diversion

FIGURE NUMBER
Figure 2-32 Revision 2



This drawing has been prepared for the use of AECOM's client. It may not be used, modified, reproduced or relied upon by third parties, except as agreed by AECOM or as required by law. AECOM accepts no responsibility, and denies any liability whatsoever, to any party that uses or relies on this drawing without AECOM's express written consent. Do not scale this document. All measurements must be obtained from the stated dimensions.